

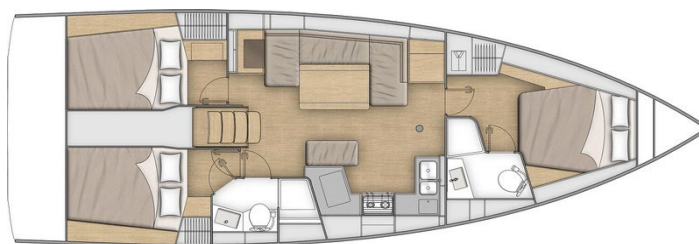


Sunsail 42

Specifications and Equipment List

Sunsail Charter Upgrades in BOLD

| | |
|-------------------|--------------------|
| Length Overall: | 42ft 3in 12.87m |
| Waterline Length: | 38ft 5in 11.70m |
| Beam: | 13ft 9in 4.18m |
| Draft: | 5ft 6in 1.68m |
| Fuel Capacity: | 52 US Gal 195 L |
| Water Capacity: | 139 US Gal 525 L |
| Engine: | Yanmar 45HP |



CONSTRUCTION

- Monolithic polyester contact hull
- Monolithic structural inner moulding bonded to the hull (Fabrics -resin)
- Injected deck construction in glass fiber and Saerfoam foam sandwich, covered with non-slip diamond pattern
- **Shallow cast iron keel**
- Twin rudders hung with stainless steel stock
- **White coloured hull - Sunsail graphics**
- 6 Hull portholes

DECK EQUIPMENT

- **Classical 9/10 anodised aluminium mast, 2 spreaders**
- Anodised aluminum boom
- Classic stainless steel single strand standard rigging
- Split backstay
- Rigid boom vang with tackle
- Mainsail stay rope on the roof (with 2 chainplates)
- 1 Self-tacking jib track with traveller
- Complete running rigging: Mainsail halyard, Genoa halyard with cleat on mast, Boom topping lift with cleat on mast, Mainsheet, 1 Self-tacking jib sheet
- **Halyard bags**
- 9 Clutches
- 2 flag halyards
- 1 manual self tailing winch (H40.2 STA)
- **1 Port electric primary winch (H40.2 STAEH) in lieu of standard**
- 1 Winch handle
- 1 Winch handle box
- **Custom heavy duty battened charter mainsail**
- **Charter upgrade, heavy duty furling genoa with UV protection strips**
- **Stackpack LazyJack system in Sunsail blue with logo**
- **Proful genoa furler**
- Self-draining chain locker - Integrated clenck on the deck - Hatch cover
- Single roller stainless steel bow fitting with offset roller
- **Additional anchor roller**
- 6 Aluminum mooring cleats (Length: 300mm / 12")
- Stainless steel chafing plate

Exhibit A

- 2 stainless steel pulpit(s)
- 2 Stainless steel pushpits
- 2 Stainless steel handrails on coachroof
- 1 Lifebuoy support bracket
- Tube welded onto pulpit for flag
- **Custom double guard lines and stainless steel stanchions**
- Emergency ladder on pushpit
- **Electric windlass (1000 W)**
- **Windlass control in cockpit with chain counter**
- **Aft transom protection**
- **Bow protection**
- **Outboard engine bracket**
- **Stainless steel anchor and galvanized chain**
- **Support bracket for shore power cables**

COCKPIT

- Self-draining cockpit
- 1 2-section cockpit bottom locker: 1 hull bottom access and 1 gas bottle
- Natural solid wood slatted cockpit benches
- Foldaway helmsman foot chock
- 2 Steering wheel consoles
- 2 Deck access for emergency tiller, below footrest
- 1 Tiller
- 1 Steering compass on the cockpit table
- **"Luxe" cockpit table**
- Fully opening transom, convertible to bathing platform
- Intermediate cockpit access step
- Natural solid wood decking on swim platform
- 1 Fixed, telescopic stainless steel swimming ladder
- **Hot/cold water cockpit shower**
- **LED courtesy light in cockpit**
- **Bimini and dodger**

SALOON / INTERIOR

- **Light oak woodwork with charcoal material panelling**
- Laminated floorboards
- Wooden saloon companionway with hanging steps made from laminated moulded wood
- **Specific non-slip surface on the companionway steps**
- 2 Stainless steel companionway handrails
- U shaped saloon bench - double density foam
- **Saloon table converts to double berth**
- **Custom upholstery**
- Storage under bench seats
- 1 Hull porthole
- 2 Coaming windows with pleated blinds
- 2 Opening deck hatches with mosquito screen/blinds
- **LED indirect lighting**

CHART TABLE

- Table with drop fronts - Wooden fiddle
- Switch panel on bulkhead for access to electrical functions
- Stowage against the bulkhead below the chart table
- 1 x spotlight
- 1 x Opening porthole in coaming
- 1 x Fixed coaming window with pleated blind

GALLEY

- C-shaped galley
- Work top in Compact Clay
- Stainless steel sink 2 rectangular basins - 1 Mixer tap with hot/cold water under pressure
- **Stainless steel cooker 3 burner oven/grill on gimbal**
- **190L / 50 US Gal icebox, front opening (with 10 L/3 US Gal freezer)**
- Fitted lockers and closed shelving
- Open shelving above stove and sink
- Low-level stowage below sink
- Lower unit: 1 door, 2 drawers
- Bin with access on the work top
- 2 Coaming windows with pleated blinds
- 1 Hull porthole
- 1 Flush deck hatch with blind/mosquito net
- **Microwave**

FORWARD OWNER'S CABIN

- 1 Central double bed
- 1 Hanger closet, open storage compartment along the hull
- 1 bedside table on each side of the bed
- 2 Spotlights on the headboard
- 2 Flush deck panel with blind/mosquito net
- 2 Portholes with rigid sliding blind

FORWARD OWNER'S HEAD

- Shower with perspex door - self-draining storage tray - 1 mixer tap
- **1 Electric toilet**
- 1 50 L / 13 US Gal rigid holding tank
- 1 Polyester basin - 1 Hot/cold water mixer tap
- 1 Cabinet + Storage space under the basin
- 1 Mirror
- Toilet accessories
- 1 Deck hatch with blind/mosquito net

AFT CABINS

- 1 Double bed
- 1 Storage locker
- 1 Bed access sideboard
- 1 Spotlight on the headboard
- 1 Hull porthole with curtain
- 1 Opening porthole below cockpit seat with curtain
- **Additional opening porthole for improved ventilation**

AFT HEAD

- Access from the saloon or the starboard aft cabin
- Shower with perspex door - self-draining storage tray - 1 mixer tap - white polyester shower base
- **1 Electric toilet**
- 1 80 L / 21 US Gal rigid holding tank
- 1 Polyester basin - 1 Hot/cold water mixer tap
- 1 Cabinet + Storage space under the basin
- 2 Mirrors
- Toilet accessories
- 1 Opening porthole in coaming

ENGINE & CONTROLS

- 45 HP Yanmar engine
- Engine control and engine control panel
- Engine compartment: Soundproofing foam - Ventilation: 3 air intakes and 1 forced air outlets
- 1 Alternator 12 V / 125 Ah
- 1 Rotomoulded diesel tank 195 L / 52 US Gal (under port aft berth)
- Electronic gauge - Low level alarm - 1 Deck filler
- Filters: Seawater - Diesel - Water separator
- Fixed three blades propeller
- 1 Engine access through companionway (opening with 2 gas struts) - 2 Engine access through aft cabins

ELECTRICAL INSTALLATION

- **110V or 230V system (6 Inside sockets, 1 Shore power socket)**
- 12V circuit
- 1 Power distributor
- **AGM batteries in lieu of standard and increased battery capacity**
- **60 Amp battery charger**
- **Navicolor monitoring system**
- 12 V electrical panel on the chart table with USB socket
- Lighting: Overhead lights - Spotlights - LED strip
- Navigation lights (LED): 2 Navigation lights - 1 Anchor light on masthead - 1 Aft starboard stern light
- Wire runs for option cables
- **Stereo system with interior and exterior speakers**
- **Full Raymarine electronic package**
- **USB socket in the cabins**
- **Fans in saloon and cabins**
- **Shore power air conditioning**
- **TV**
- **Underwater light**
- **Solar panel**

PLUMBING INSTALLATION

- 1 rotomoulded freshwater tank (195L / 52 US Gal) under starboard aft berth - 1 Deck filler
- **Additional freshwater tank (330L / 87 US Gal)**
- Pressurised electric water pump - Expansion tank - Inline filter
- 40 L / 11 US Gal Electric water heater (engine use)
- 1 Rigid black water holding tank for each toilet
- Electrical shower drain pumps
- 1 Electric bilge pump
- 1 Manual bilge pump

GAS

- Container for gas bottles in the cockpit locker
- Regulator and safety tap
- **Enhanced safety gas system**

GENERAL EQUIPMENT

- **Mooring / dock lines / fenders**
- **Safety pack**
- **Charter pack**
- **Commissioning and delivery to charter base**

NOTE

The Builder reserves the right to change or amend the contents of this document at any time without prior notification to any third party, and no liability will be accepted for errors contained within the same.